



Lead By Design



# INSPIRATION PORTFOLIO

VOLUME 24



Lead By Design

# Table of Contents

<b>1. Why We Are Different</b>	<b>5</b>	Career Academy	42	<b>6. Healthcare</b>	<b>79</b>
Our Team	6	Elkhart High School	43	Canterbury Woods	80
Engineered & Created in Milwaukee, Wisconsin	7	Center Grove Middle School North	44	Fort Walton Beach Medical Center	81
Durability	8	Warren Center High School	45	Goshen Hospital	82
Durability	9	Southport Middle School	46	Goshen Hospital	83
Convertability	10	Jefferson High School	47		
Serviceability & Changeability	11	Cowan High School	48	<b>7. Theme Parks &amp; Resorts</b>	<b>85</b>
Cleanability	12	Eastern Green Middle School	49	Breckenridge Ski Resort	86
Portability & Flexibility	13	Vista Magnet Middle School	50	LegoLand	87
Excellence in Pre-wiring Capabilities	14	Vista Magnet Middle School	51		
Excellence in Pre-wiring Capabilities	15			<b>8. Free-Standing Retail Concepts</b>	<b>89</b>
				Godiva Café	90
<b>2. M-POWER, Various Projects</b>	<b>17</b>	<b>3. Colleges &amp; Universities</b>	<b>53</b>	Essence™ Perpetual Café	91
M-POWER	18	University of Wisconsin - Platteville	54	Essence™ Perpetual Café	92
M-POWER	19	North Carolina State University	55	Creative Overstructure Designs & Food Station Identifiers	93
		Stockton University	56	Stanford University	94
<b>3. K-12</b>	<b>21</b>	Westfield State University	57	Towson University	95
Bucktail High School	22	Harvard Interim Dining	58	Coffee Café	96
Muncie Central High School	23	University of California	59	Coffee Café Portable Retail Concepts	97
McCutcheon High School	24	Cornell University – Café Jennie	60	Portable Retail Concepts	98
McCutcheon High School	25	Cornell University – Café Jennie	61	Espresso Machine Counter	99
Merrill F. West High School	26	Cold Spring Harbor Institute - Blackford Hall	62		
Lawrence High School	27	Texas Tech University	63	<b>9. Salad Bars, Beverage Counters &amp; Cashier Stands</b>	<b>101</b>
Peterson Middle School	28			Beverage Counter	102
Turlock High School	29	<b>4. Business &amp; Industry</b>	<b>65</b>	Island Salad Bar	103
Martinsville High School	30	Vera Bradley	66	Island Salad Bar	104
Connersville Middle School	31	FM Global	67	Soup Salad Counter	105
Mooresville High School	32	South Jersey Gas – World Headquarters	68	Breckenridge Ski Resort	106
Capitol Hill Middle School	33	Javit's Convention Center Employee Dining	69	Murray State University	107
Castle High School	34	Meta	70		
New Berlin High School Café	35	Meta	71	<b>10. Against the Wall and Island Condiment Counters</b>	<b>109</b>
Connersville Middle School	36	Meta	72	Various Locations	110
Jay County High School	37	State Farm Corporate Headquarters	73	Murray State University	111
Elkhart High School	38				
Central Mountain High School	39	<b>5. Convenience Stores</b>	<b>75</b>		
C.K. McClatchy High School	40	KWIK TRIP	76		
Michigan City High School	41	University of Illinois	77		



Manufacturing & Assembly for Belding Area Schools, Belding, Michigan

# 1. Why We Are Different



---

## Our Team



**Mike Egan**  
Executive Vice President  
845-896-1940  
megan@esandstonegroup.com

Mike collaborates with the end user and design consultant to help conceptualize new designs and new product development.

Previously, Mike served as VP of Hospitality Design for a nationally respected consulting and design firm, which set the foundation for his unique design ability and thorough understanding of the customer. He specializes in food service equipment planning and design for a large variety of world-class hotels, resorts, convention centers, country clubs and independent restaurants.



**John Wojcik**  
Vice President, Market Development  
920-889-1564  
jwojick@elakeside.com

John works within various operator segments, and the design professionals who support them, to create functional and efficient serving solutions, bringing Multiteria's world class design and fabrication to the project.

John's career in business development includes both product and project development, aligning operators needs with the capabilities of the supplier. His success has come from creating clarity on every project's definition and scope, and his ability to pull resources from multiple areas, and manage the process to successful resolution. John specializes in foodservice and retail projects for K-12 Schools, College/Universities, Healthcare, B&I, Hospitality, Restaurants, and Entertainment Venues.



**Sherie Peterson**  
Project Manager  
630-585-1369 x205  
speterson@multiteriausa.com

Sherie works to bring design ideas to finalized plans with equipment costing.

Sherie has worked in the food service industry for 19 years with 10 of those years working on creating CAD drawings with Food Service Consultants. Sherie has a strong knowledge of NSF and has great attention to detail to help a project move smoothly to completion.



**Craig McDonald**  
Project Manager  
630-585-1369 x206  
cmcdonald@multiteriausa.com

Craig has over 27 years of experience in the food service equipment industry with extensive project management experience.

Craig began his career as a Quality Assurance Manager and evolved into positions including Technical Field Service, Project Coordinator and Project Management for notable Food Service Equipment manufactures. He has a strong electrical background along with exceptional planning and organizational skills.

# Engineered & Created in Milwaukee, Wisconsin



---

## Durability

*Lifetime warranty on core and shell*



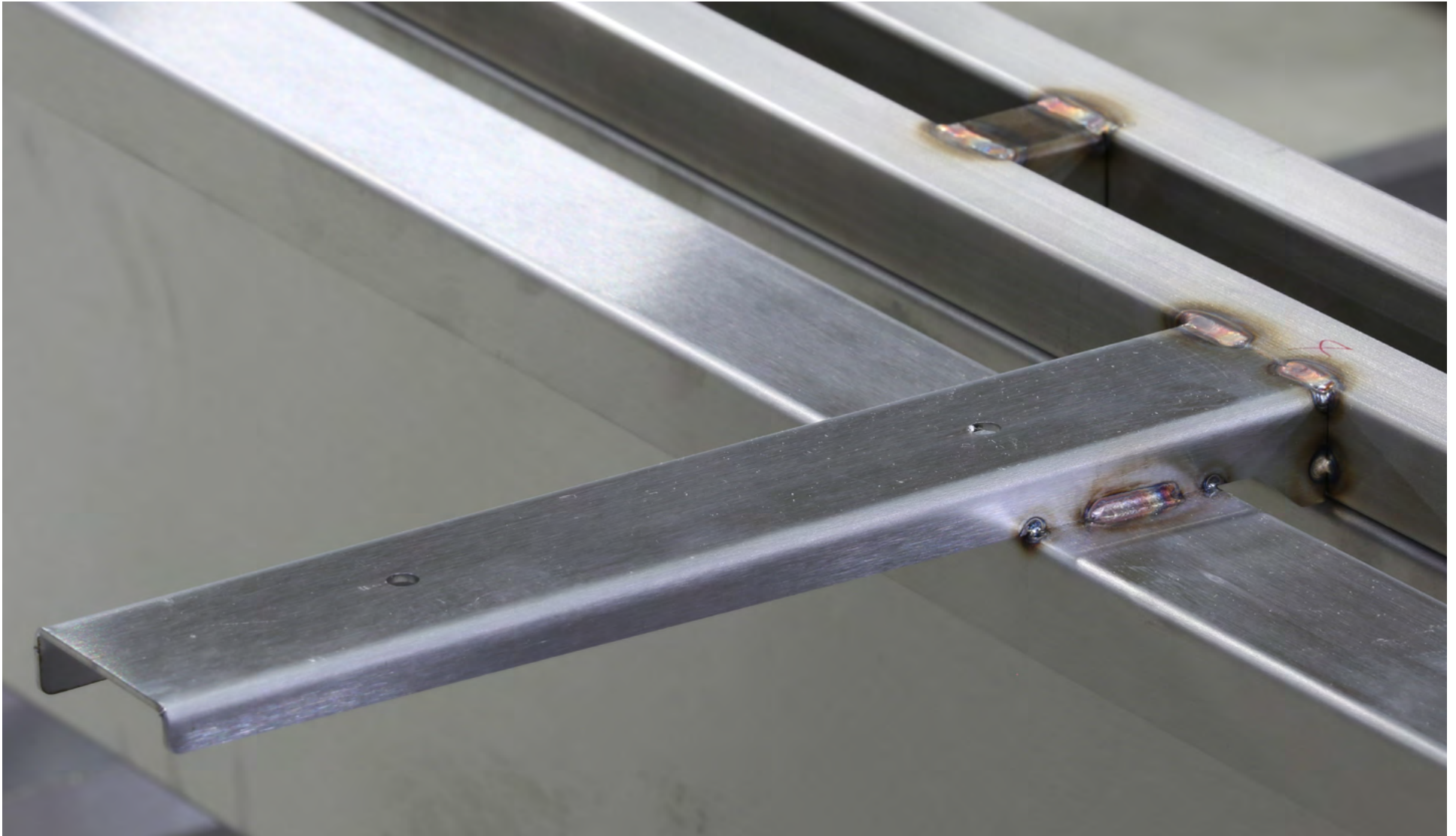
### 100% Stainless Tubular Construction

- Extremely strong, durable and sanitary-especially important when counters need to be portable.
- Removable undershelves, best for cleaning.

---

## Durability

*(continued)*



### 100% Stainless Tubular Construction

- Extended posts support tray slides

---

## Convertability



- Sneeze guard converts from operator service to self service- no set screws or knobs
- Tubular sneeze guard is very robust
- Extends to bottom of the entire frame. NO counter-top fasteners or screws. Available in s/s or black

---

## Serviceability & Changeability

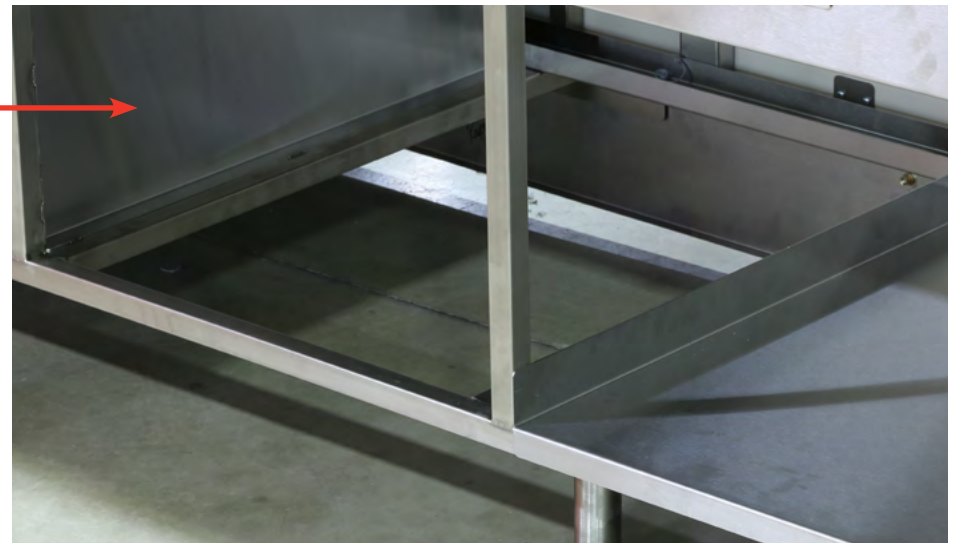
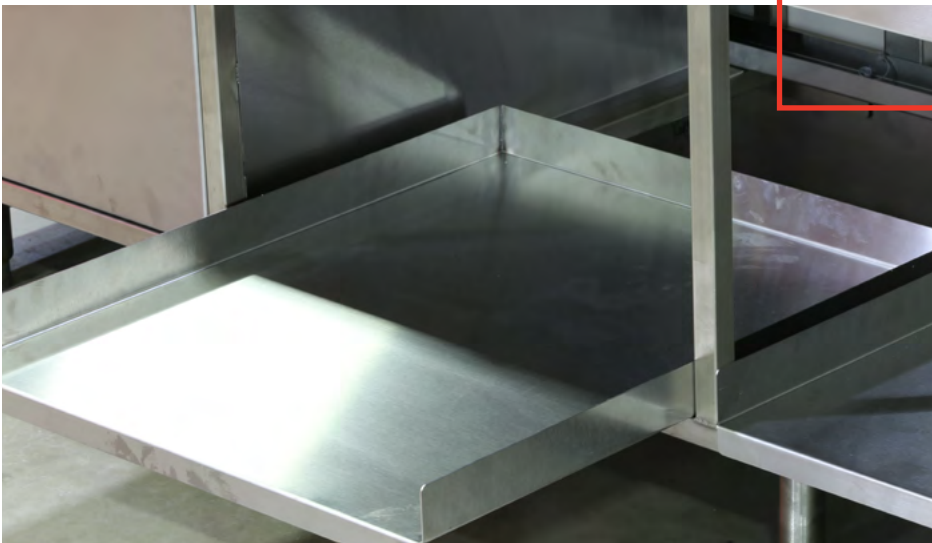


### Exterior

- Easily removable and replaceable front and end panels make refurbishing, a design change or service access easy and affordable
- Food shield post extends to base of frame

---

## Cleanability



- Removable under shelf for easy cleaning and sanitization of floor below
- Removable kick plates

---

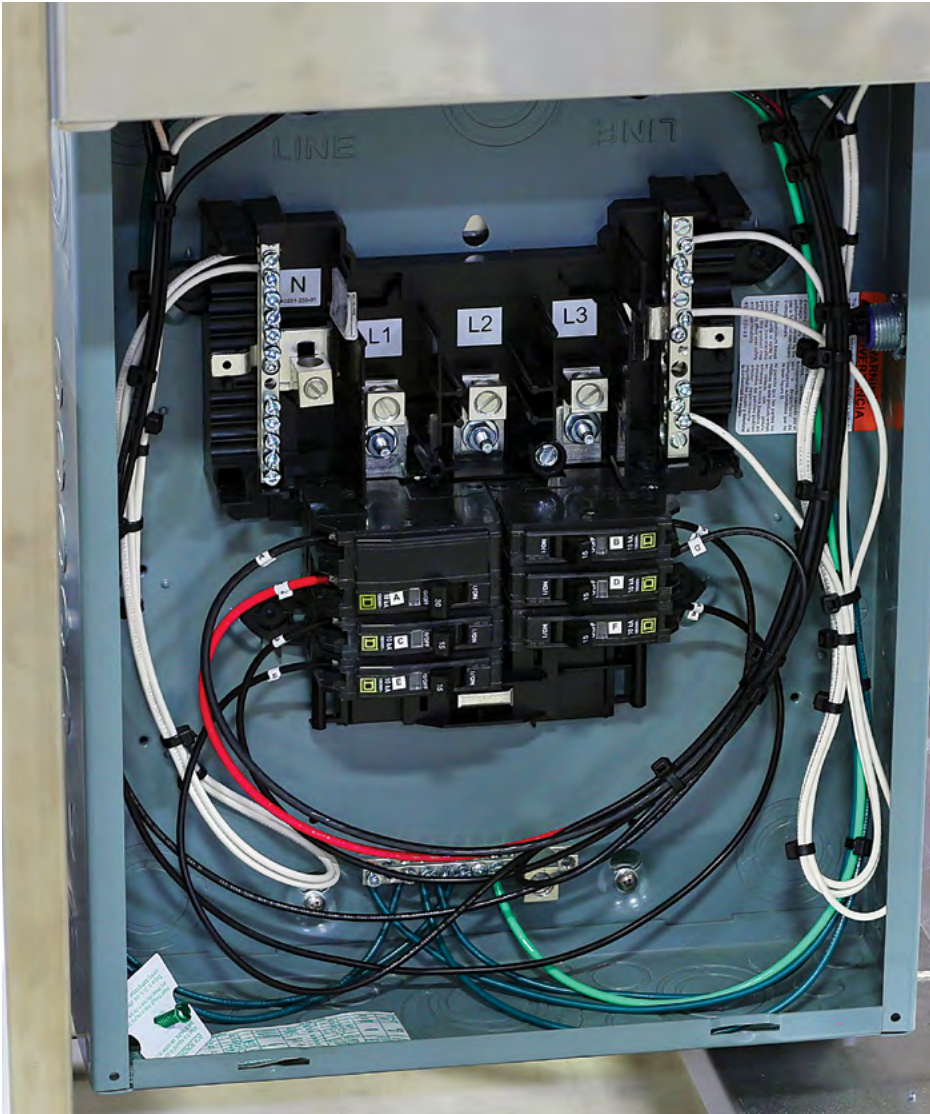
## Portability & Flexibility



### TIGHT LINK LOCKING SYSTEM

- Channel locks two or more units together
- Units can be configured or moved to another location

## Excellence in Pre-wiring Capabilities



- Single point electrical connections or load center
- Easy Installation – “plug and play” design
- Chase way

---

# Excellence in Pre-wiring Capabilities

*continued*





Manufacturing & Assembly for Adobe Bluffs Elementary School, San Diego, California

## 2. M-POWER, Various Projects



---

# M-POWER

*(various projects)*



M-POWER

---

# M-POWER

(various projects)



M-POWER



Dale JR HS  
1

Manufacturing & Assembly for Dale Jr. High School, Anaheim, California

# 3. K-12



---

Bucktail High School  
(Renovo, Pennsylvania)



*Essence™*

---

# Muncie Central High School

(Muncie, Indiana)



*Essence™*

McCutcheon High School  
(Lafayette, Indiana)



Essence counters featured with new pergola super structure with removable black coat laser cut lettering back lit, monitor bracket & pendant lights. (Monitor by others)

*Essence™*

# McCutcheon High School (Lafayette, Indiana)



This project showcases our latest new product creations and capabilities. Pergola canopies, vinyl wrapped air screen enclosure, snack racks and artistic laser cut offset panels gives this high school an extra special appearance that students really enjoyed.

*Essence™*

---

## Merrill F. West High School (Tracy, California)



Essence™ counters were provided with a solid surface top and standard service to self service food shields. The counter fronts have offset 3Form panels to match the interior theme of the space. Overstructures with signage and pendant lights were added to create food station identity.

*Essence™*

---

Lawrence High School  
(Indianapolis, Indiana)



Ultra compact design accommodates a lot of equipment in a very small space.

*Essence™*

---

## Peterson Middle School (Santa Clara, California)



Essence™ Counters shown feature continuous, extended, Corian countertops which eliminates the need for independent tray slides creating a more upscale, retail experience. Counter fronts have offset 3Form panels to match the interior theme of the space.

*Essence™*

---

# Turlock High School

(Turlock, California)

*presentation rendering*



Essence™ counters were modified to have sloped front panels with Corian solid surface countertops. The countertops and front and side laminate colors were selected by an interior architect. Multiteria can select from a wide array of materials to suit any project need.

*Essence™*

---

# Martinsville High School

(Martinsville, Indiana)

*Cashier Counters*



*Meritage™*

---

# Connersville Middle School

(Connersville, Indiana)

*Cashier Counters*



*Essence™*

---

# Mooreville High School

(Mooreville, Indiana)



*Essence™*

---

# Capitol Hill Middle School

(Oklahoma City, Oklahoma)



*Essence™*

---

# Castle High School

(Newburgh, Indiana)



Multiteria can help you design bistros and market places that can be used as a speed line during lunch as well as support after school activities. Essence Counters shown with LED light strip below countertop. Laminate decorative offset panels by 3Form. Nevamar-Bone White. Countertop: Corian Antarctica.

*Essence™*

# New Berlin High School Cafe

(New Berlin, Wisconsin)



Coffee Café inside high school library.

*Essence™*

---

# Connersville Middle School

(Connersville, Indiana)



*Essence™*

---

# Jay County High School

(Portland, Indiana)



*Essence™*

---

Elkhart High School  
(Elkhart, Indiana)



*Essence™*

---

# Central Mountain High School

(Mill Hall, Pennsylvania)



*Essence™*

---

# C.K. McClatchy High School

(Sacramento, California)



*Essence™*

---

# Michigan City High School

(Michigan City, Michigan)



*Essence™*

---

# Career Academy

(South Bend, Indiana)

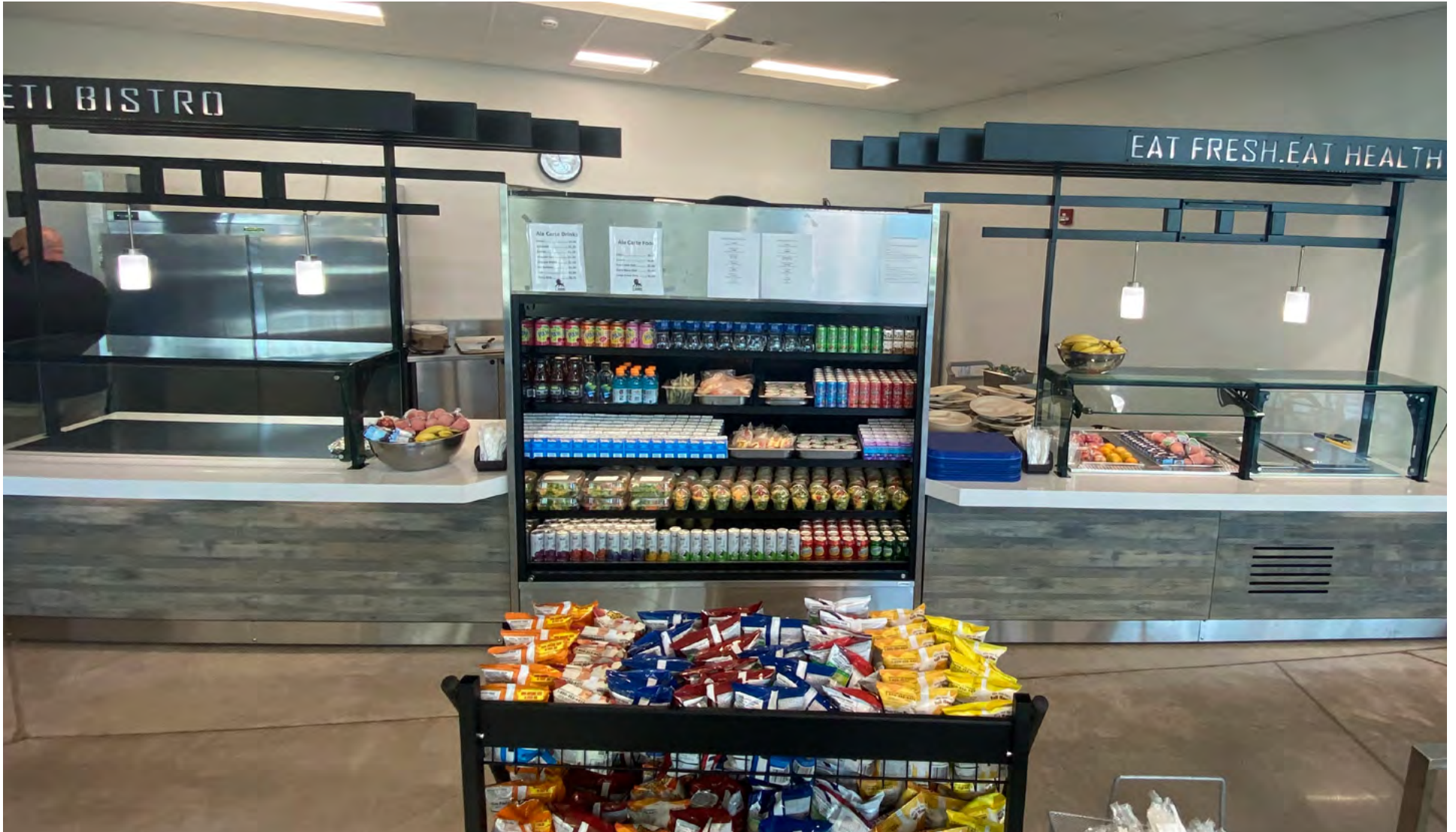


*Essence™*

---

# Elkhart High School

(Elkhart, Indiana)



*Essence™*

Center Grove Middle School North  
(Greenwood, Indiana)



*Essence™*

---

# Warren Center High School (Indianapolis Indiana)

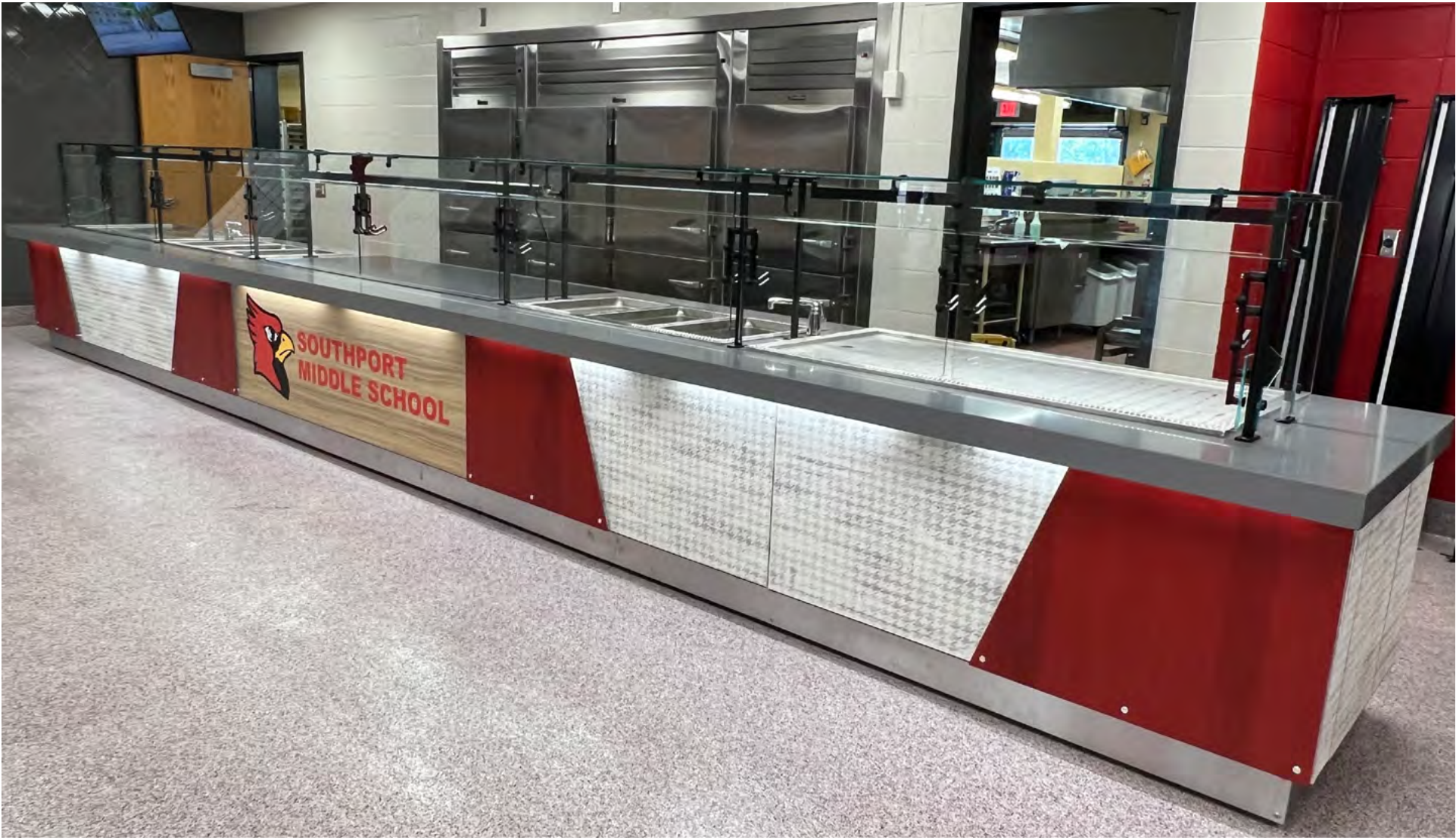


*Essence™*

---

# Southport Middle School

(Indianapolis, Indiana)



*Essence™*

---

# Jefferson High School

(Lafayette, Indiana)



*Essence™*

---

Cowan High School  
(Muncie, Indiana)



*Essence™*

---

# Eastern Green Middle School

(Bloomfield, Indiana)



*Essence™*

---

# Vista Magnet Middle School

(Vista, California)



*Essence™*

---

Vista Magnet Middle School  
(Vista, California)



*Essence™*



Manufacturing & Assembly for Stockton University

# 3. Colleges & Universities



---

# University of Wisconsin - Platteville

(Platteville, Wisconsin)



Portable cashier station with built in receptacles for weighing scales and POS terminals. Radius design of main counter was carried throughout the entire serving line.

*Meritage™*

---

# North Carolina State University

(Raleigh, North Carolina)



This design used beautiful veined quartz countertops with long waterfall edges and a very modern and up-to-date design theme. Resin panels are edge lit with LED lights that can be dimmed or change color schemes.

*Meritage™*

---

# Stockton University

(Galloway, New Jersey)



The new Stockton University Atlantic City Campus offers students a comfortable and inviting dining experience. The dining space overlooks the best Atlantic Ocean beaches.

*Meritage™*

---

# Westfield State University

(Westfield, Massachusetts)



Corian solid surface material with Wilsonart plastic laminate exterior creates a sleek, upscale design.

*Meritage™*

---

## Harvard Interim Dining

(Boston, Massachusetts)



Rich vertical grain wood plastic laminate with solid surface countertop, s/s food shield, and LED lighting makes for a very clean and transitional appearance.

*Meritage*™

---

# University of California

(Santa Cruz, California)



Island salad bar with crisp modern finishes in high volume dining hall.

*Meritage™*

---

## Cornell University – Café Jennie

(Ithaca, New York)



The University's new fast casual retail outlet, located in the campus book store, is an excellent example of how Multiteria counter systems can be used in any retail application. Front counter has a field-applied veneer wood panel with raised moldings. Note decorative vertical panels on the countertop which are used to conceal the back side of espresso machines.

*Meritage™*

---

Cornell University – Café Jennie  
(Ithaca, New York)



*Meritage™*

---

## Cold Spring Harbor Institute - Blackford Hall

(Long Island, New York)



Multiteria worked closely with architect to create a compact, yet efficient layout. Essence Counters are finished in Caesarstone (London Gray 5000) and Wilsonart (Amazon D478-60).

*Meritage™*

---

# Texas Tech University

(Lubbock, Texas)



Essence™ counters shown with solid surface tops and Versa-Gard® Euro-style vertical glass food shields. Counter fronts are real wood panels applied in the field by a millwork contractor to match the interior theme of the space.

*Meritage™*



Manufacturing & Assembly for Edgewood ISD, Edgewood, TX

# 4. Business & Industry



---

Vera Bradley  
(Roanoke, Indiana)



Typical Essence™ Counters with white plastic laminate panels and coordinating white solid surface material with stainless steel runners.

*Essence™*

---

## FM Global

(Boston, Massachusetts)



This project was manufactured without counter tops, and then stone tops were installed in the field by others. Counter shown with standard laminate along with a ¼" raised stainless steel vertical accent reveal between the panels for aesthetic appeal.

*Meritage™*

---

## South Jersey Gas – World Headquarters (Atlantic City, New Jersey)



Multiteria worked with a leading FS design consultant to create this compact and efficient dining environment that serves hundreds of meal per day in a very attractive setting.

*Meritage™*

---

## Javit's Convention Center Employee Dining (New York, New York)



This attractive dining facility was developed to offer employees an excellent environment to take a break and recharge during their work day. Upscale dining environments are important for employee morale and retention in a competitive labor market.

*Meritage™*

---

Meta  
(Toronto, Canada)



*Essence™*

Meta  
(New York City, New York)



Facebook, Hudson Hall Commons, New York. Three independent food cart designs emulate New York city's iconic food carts.

Essence™

---

# Meta

(New York City, New York)



Essence™

---

# State Farm Corporate Headquarters

(Lincoln, Nebraska)



Meritage™



Manufacturing & Assembly for Kwik Trip, Wisconsin

# 5. Convenience Stores



---

# KWIK TRIP

(Wisconsin)



Island Condiment Counter designed to match existing millwork.

*Essence™*

---

# University of Illinois (Champaign, Illinois)



University of IL Pennsylvania Ave C-Store: C-stores are a rising trend in College and university campuses. Multiteria broke the mold and designed all of the service counters within this very popular venue.





Manufacturing & Assembly for Fort Walton Beach Medical Center, Fort Walton Beach, Florida

# 6. Healthcare



[multiteriausa.com](http://multiteriausa.com)

---

## Canterbury Woods (Pacific Grove, California)



Progressive assisted living facility used Multiteria to add excitement, aroma animation and stimulate appetites by displaying the food more prominently in the dining space.

*Meritage™*

---

## Fort Walton Beach Medical Center

(Fort Walton Beach, Florida)



This upscale doctors' lounge was specifically developed to provide doctors an upscale dining environment, which helps hospitals with recruitment and retention of the best skilled staff.

*Meritage™*

---

# Goshen Hospital

(Goshen, Indiana)

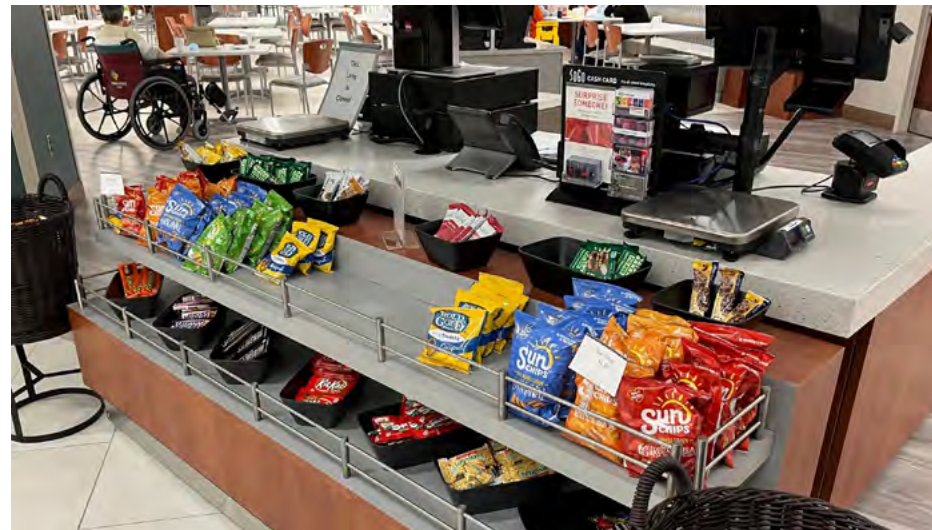


*Meritage™*

---

# Goshen Hospital

(Goshen, Indiana)



Meritage™



Manufacturing & Assembly for Lego Land, Carlsbad, California

# 7. Theme Parks & Resorts



---

# Breckenridge Ski Resort

(Breckenridge, Colorado)



Meritage™

---

# LegoLand

(Carlsbad, California)



Meritage™



Manufacturing & Assembly for Godiva, King of Prussia, Pennsylvania

# 8. Free-Standing Retail Concepts



---

## Godiva Café

(King of Prussia, Pennsylvania)



This kiosk was installed in a highly visible, open area of a large shopping mall. All pre-constructed and delivered in modular sections with built in electrical and plumbing services made installation fast so the concept could open in time for the busy holiday season.

*Meritage™*

---

# Essence™ Perpetual Café

*presentation rendering*



We provide cutouts and make provisions for all food service equipment you may need for your operation such as display cases, cold pans, heated thermal shelves, coffee brewing equipment, display fixtures and cash registers. We can build in and around refrigerated display cases and other fixtures.

*Meritage™*

---

# Essence™ Perpetual Café

*presentation rendering*



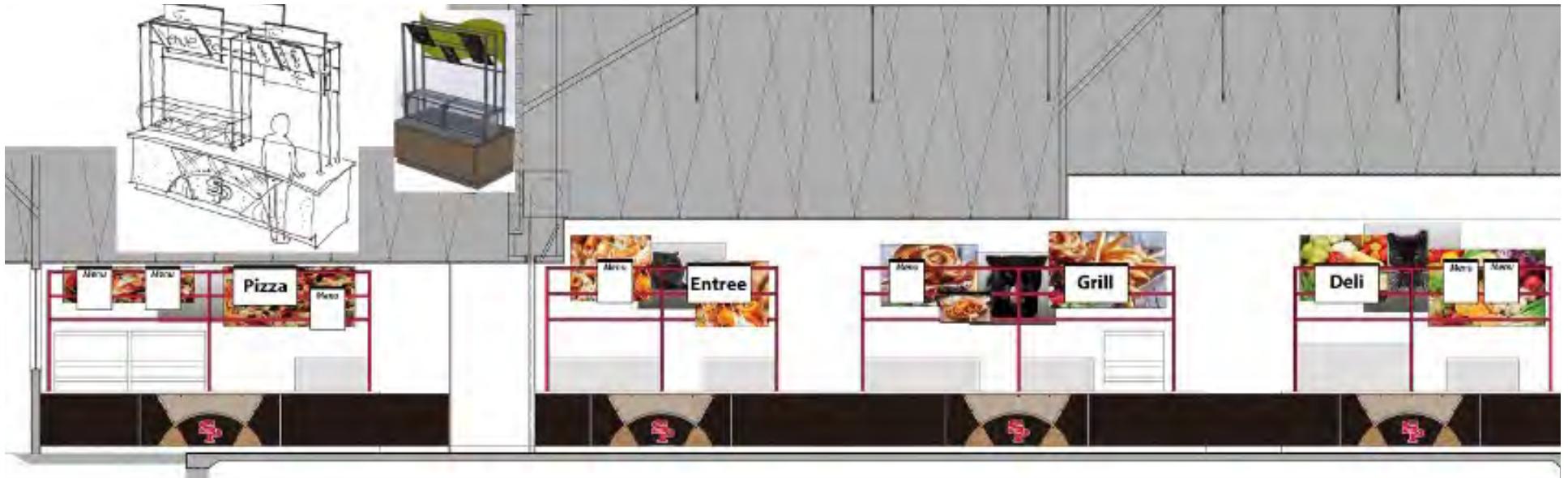
## **Ideal for lobby café kiosks or specialty retail venues**

Essence™ modular counters can be configured to create a free-standing retail kiosk. Rounded corner pieces tie the sections together. The solid surface countertop is installed with as few seams as possible. Where countertop seams are unavoidable, the joints are finished in the field, providing a seamless, rigid countertop surface. Exterior panels can be finished in any style to suit your imagination.

*Meritage™*

# Creative Overstructure Designs & Food Station Identifiers

*presentation rendering*



Abstract Canopy (left). Pergola canopy (right).

---

# Stanford University

(Stanford, California)



Retail Xtension featured as a cooking/demonstration table with induction units. Highlights aroma, animation and exhibition cooking in front of students to get menu ideas and teach them how to cook.

RETAIL **X**TENSION

---

# Towson University

(Towson, Maryland)



Retail Xtension set up in a sports stadium wrapped with high resolution school colored graphics.

RETAIL XTENSION

---

# Coffee Café

*presentation rendering*

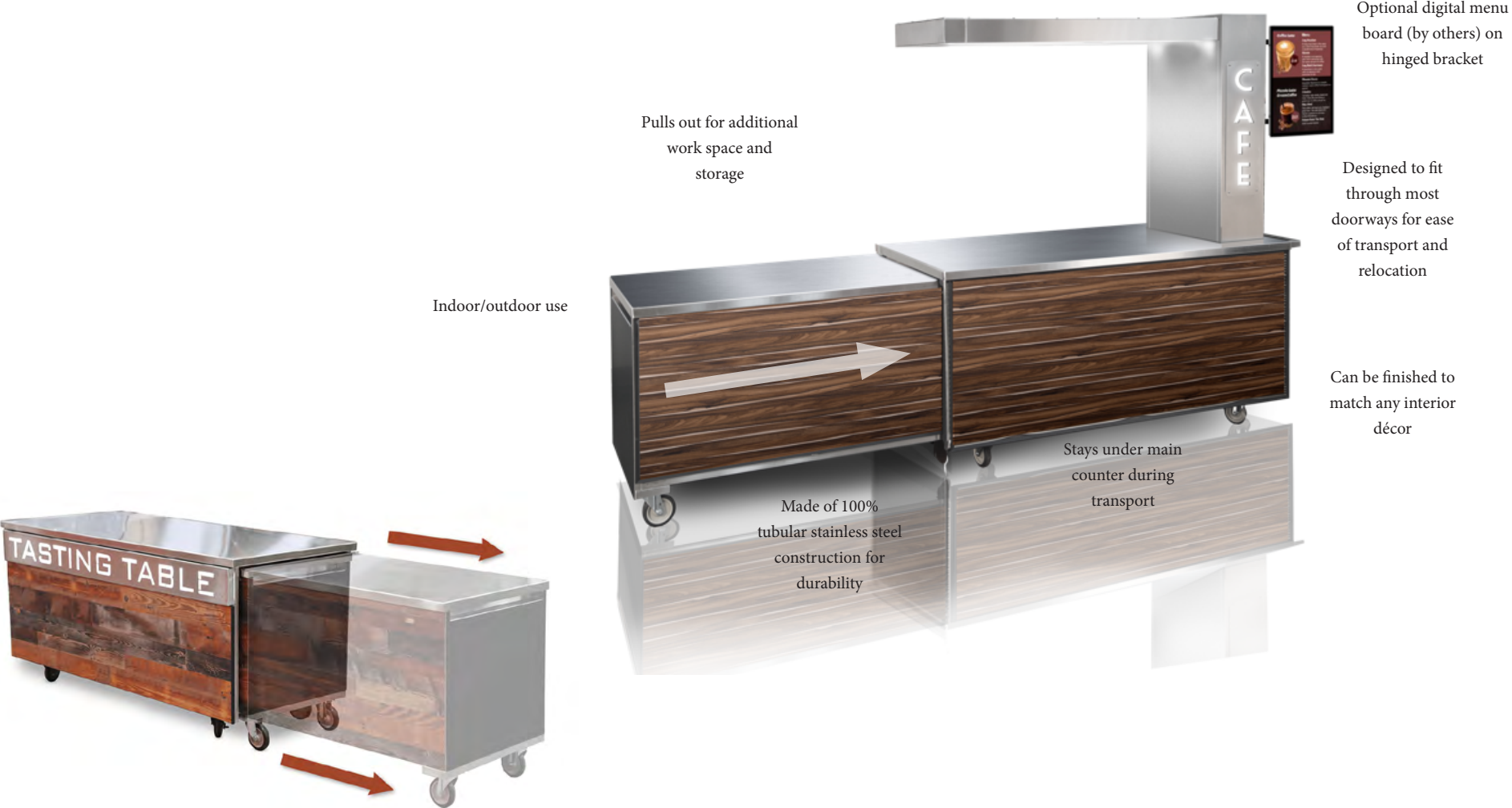


Rendering example of how our retail concept can fit your space.

RETAIL X TENSION

# Coffee Café Portable Retail Concepts

*presentation rendering*



Indoor/outdoor use

Pulls out for additional work space and storage

Optional digital menu board (by others) on hinged bracket

Designed to fit through most doorways for ease of transport and relocation

Can be finished to match any interior décor

Stays under main counter during transport

Made of 100% tubular stainless steel construction for durability

Start with the Retail X-tension Counter.



# Portable Retail Concepts

*presentation rendering*

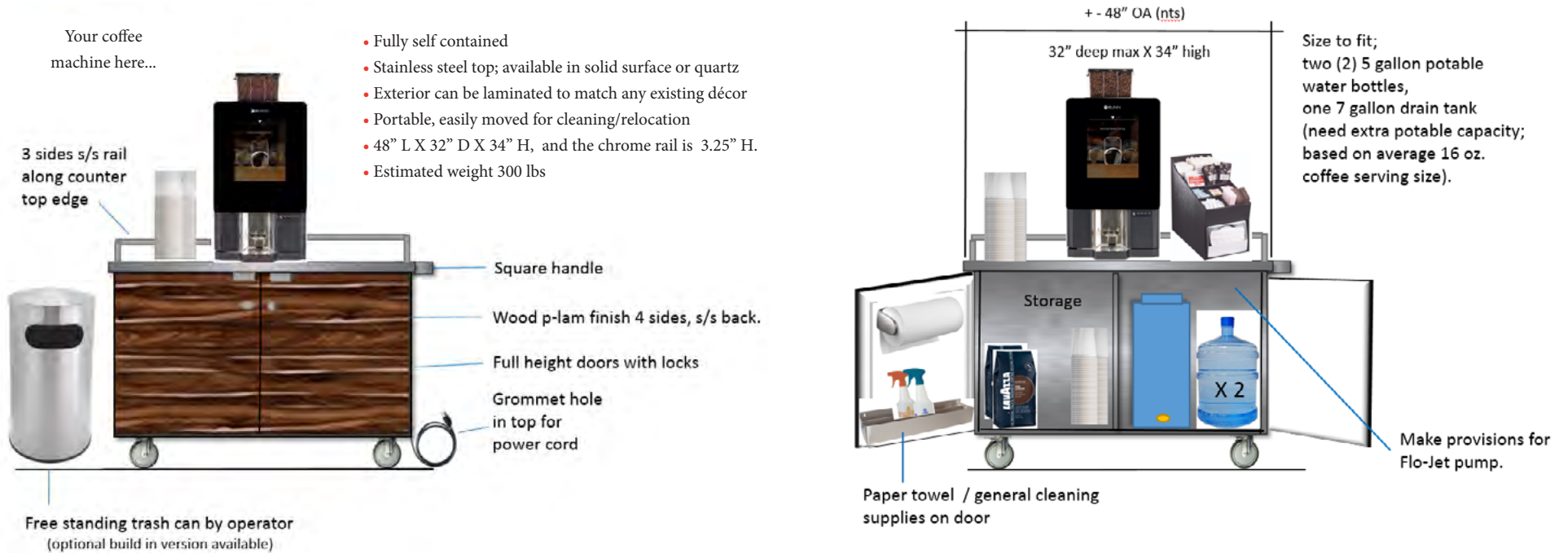


You can add any pieces to the retail X-tension to support your concept!



# Espresso Machine Counter

*presentation rendering*



How we manage "on board" self contained water/drainage and electrical services on portable retail equipment.



Manufacturing & Assembly for Royse City High School, Royse City, Texas

# 9. Salad Bars, Beverage Counters & Cashier Stands



---

## Beverage Counter



Meritage™

---

## Island Salad Bar



Essence™ two-sided, self-serve Salad Kiosk features an extended Corian top which eliminates the need for independent tray slides. The counter fronts have offset 3Form panels to match the interior theme of the space.

*Essence™*

---

## Island Salad Bar



Two-sided, self-serve Salad Kiosk with Corian tray slide with stainless steel runners.

*Essence™*

---

## Soup Salad Counter



*Essence™*

---

# Breckenridge Ski Resort

(Breckenridge, Colorado)



Meritage™

---

Murray State University  
(Murray, Kentucky)



Meritage™



MULTIPLEX, L.L.C. WEST MILWAUKEE WI  
MODEL: 3L3A 3A3E 3A3E1024  
ELECTRICAL DATA (SEE SEE SEE SEE)  
C LISTED LEB 1 LEB 2  
3NJB VOLTS 200  
AMPS 100  
CUSTOM BUILT MODEL SERVICE EQUIPMENT M



12A-12

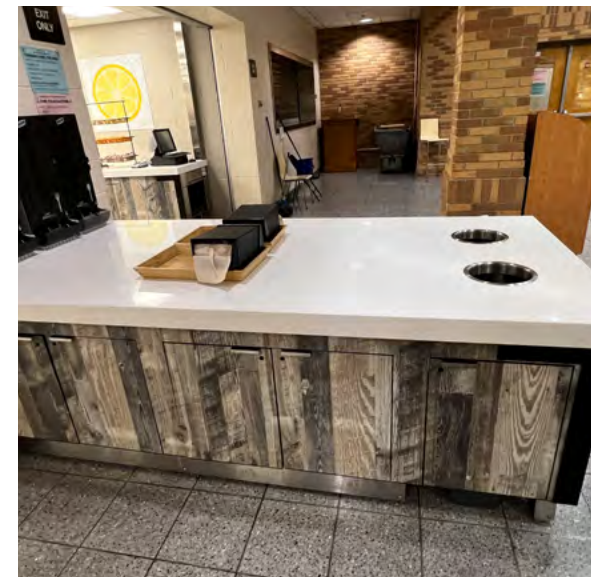
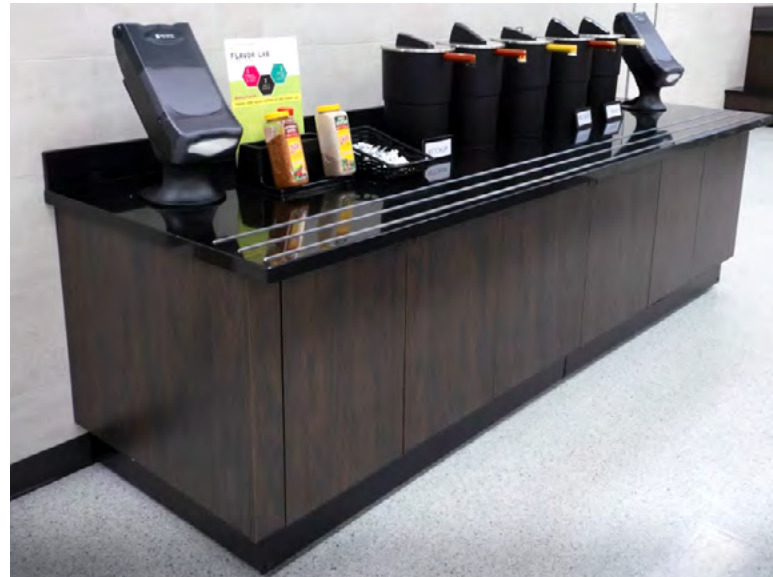
Manufacturing & Assembly for Abbott

# 10. Against the Wall and Island Condiment Counters



---

## Various Locations



---

Murray State University  
(Murray, Kentucky)



*Essence™*



Lead By Design



## Multiteria USA, LLC

4900 West Electric Avenue West

Milwaukee, Wisconsin 53219

Phone: (630) 585-1369

FAX: (414) 902-6446

[multiteriausa.com](http://multiteriausa.com)

[info@multiteriausa.com](mailto:info@multiteriausa.com)

© 2024